

**TFF1 Antibody (monoclonal) (M02)****Mouse monoclonal antibody raised against a full length recombinant TFF1.****Catalog # AT4221a****Specification**

---

**TFF1 Antibody (monoclonal) (M02) - Product Information**

Application	WB, E
Primary Accession	<a href="#">P04155</a>
Other Accession	<a href="#">BC032811</a>
Reactivity	Human
Host	mouse
Clonality	Monoclonal
Isotype	IgG1 Kappa
Calculated MW	9150

**TFF1 Antibody (monoclonal) (M02) - Additional Information****Gene ID** 7031**Other Names**

Trefoil factor 1, Breast cancer estrogen-inducible protein, PNR-2, Polypeptide P1A, hP1A, Protein pS2, TFF1, BCEI, PS2

**Target/Specificity**

TFF1 (AAH32811.1, 1 a.a. ~ 84 a.a) full-length recombinant protein with GST tag. MW of the GST tag alone is 26 KDa.

**Dilution**

WB~~1:500~1000

E~~N/A

**Format**

Clear, colorless solution in phosphate buffered saline, pH 7.2 .

**Storage**

Store at -20°C or lower. Aliquot to avoid repeated freezing and thawing.

**Precautions**

TFF1 Antibody (monoclonal) (M02) is for research use only and not for use in diagnostic or therapeutic procedures.

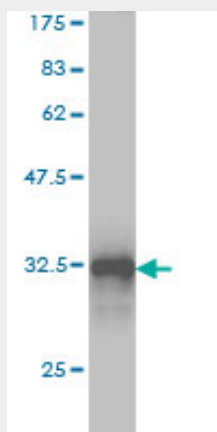
**TFF1 Antibody (monoclonal) (M02) - Protocols**

Provided below are standard protocols that you may find useful for product applications.

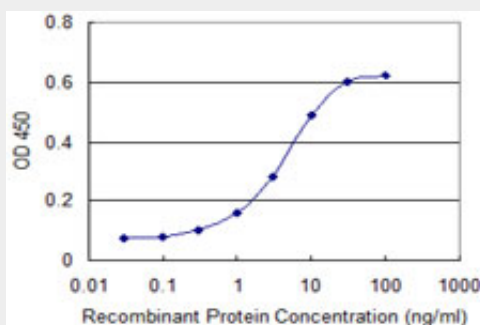
- [Western Blot](#)
- [Blocking Peptides](#)

- [Dot Blot](#)
- [Immunohistochemistry](#)
- [Immunofluorescence](#)
- [Immunoprecipitation](#)
- [Flow Cytometry](#)
- [Cell Culture](#)

### TFF1 Antibody (monoclonal) (M02) - Images



Antibody Reactive Against Recombinant Protein. Western Blot detection against Immunogen (34.98 KDa) .



Detection limit for recombinant GST tagged TFF1 is approximately 0.3ng/ml as a capture antibody.

### TFF1 Antibody (monoclonal) (M02) - Background

Members of the trefoil family are characterized by having at least one copy of the trefoil motif, a 40-amino acid domain that contains three conserved disulfides. They are stable secretory proteins expressed in gastrointestinal mucosa. Their functions are not defined, but they may protect the mucosa from insults, stabilize the mucus layer, and affect healing of the epithelium. This gene, which is expressed in the gastric mucosa, has also been studied because of its expression in human tumors. This gene and two other related trefoil family member genes are found in a cluster on chromosome 21.

### TFF1 Antibody (monoclonal) (M02) - References

1. CRK7 modifies the MAPK pathway and influences the response to endocrine therapy. Iorns E, Martens-de Kemp SR, Lord CJ, Ashworth A. Carcinogenesis. 2009 Oct;30(10):1696-701. Epub 2009 Aug 3.